

Ordinary Civil Servants In Thailand 2010



Foreword

This booklet presents an overview of ordinary civil service manpower for fiscal year 2010, and is a representation of the ordinary civil service workforce that can be used as a basic reference for macro manpower planning and management. The data provides the number of ordinary civil service positions and employees, grouped by ministry, position level, education, sex, age, type of government administration and location, New recruits and officials separating from the service (fiscal year 2009), and includes senior executives and high-level positions.

We would like to express our sincere appreciation to the ministries, bureaus, and departments who have extended their cooperation and support in providing the information that has made this publication possible.

We do hope that this publication will be beneficial to government agencies and those interested.

Office of the Civil Service Commission

Contents

Civilian Workforce

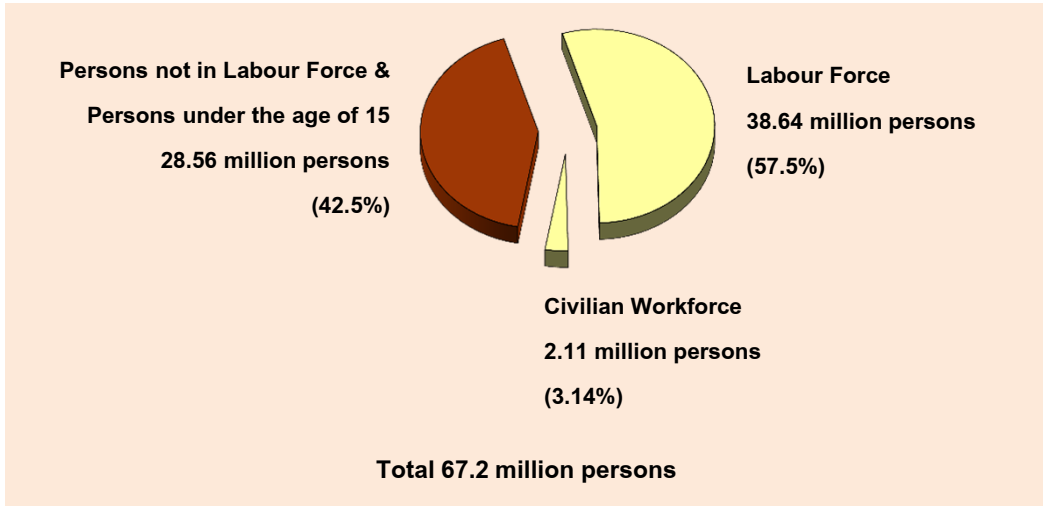
Population & Civilian Workforce	1
Government Officials by Type of Service	2

Ordinary Civil Servants

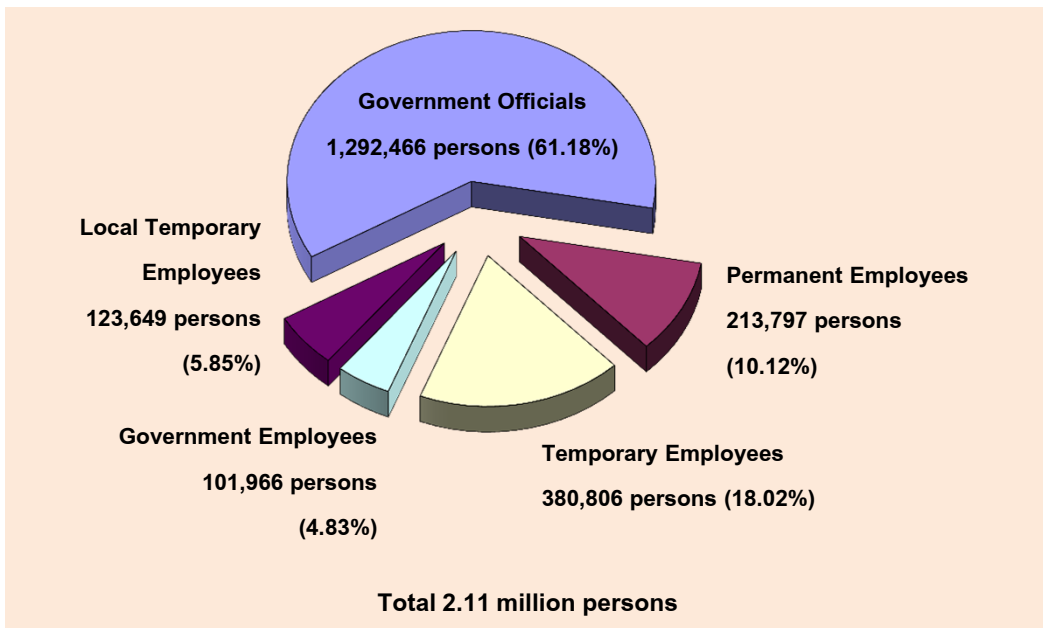
Ministry	3
Sex	4
Education	6
Position Category & Level	9
Age	12
Type of Government Administration	15
Location	17
New Recruits	19
Separation from the Service	21
Department	23

<i>High-Level Positions</i>	32
------------------------------------	-----------

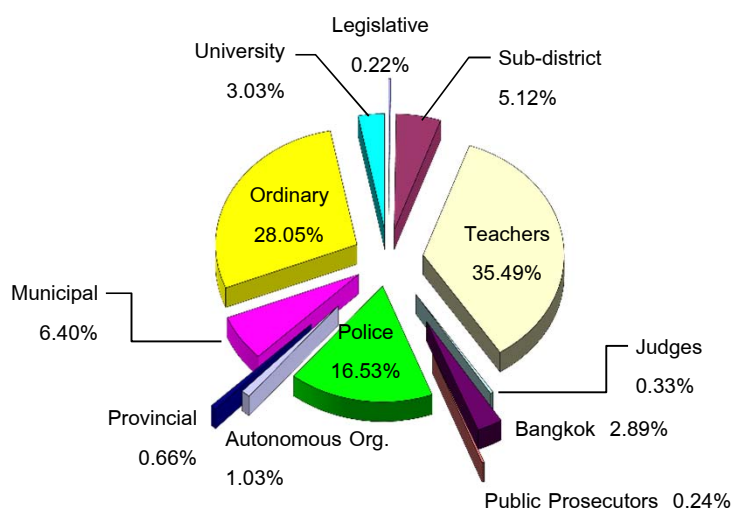
Population, Labour Force and Civilian Workforce, Fiscal Year 2010



Civilian Workforce, Fiscal Year 2010

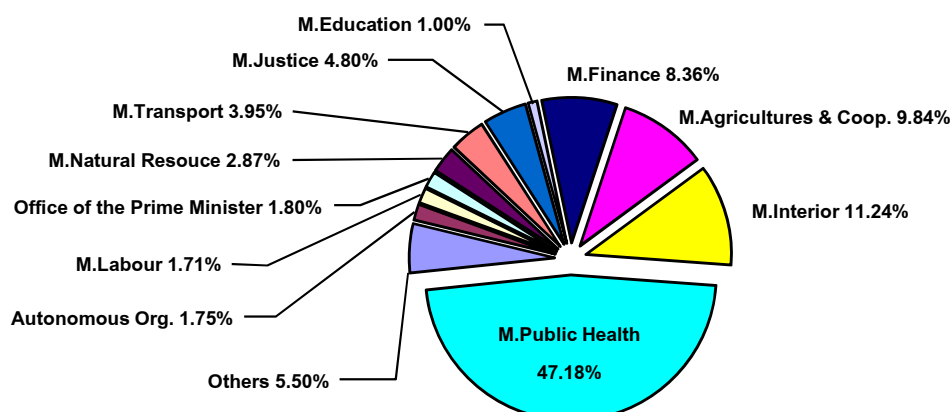


Government Officials by Type of Service, Fiscal Year 2010



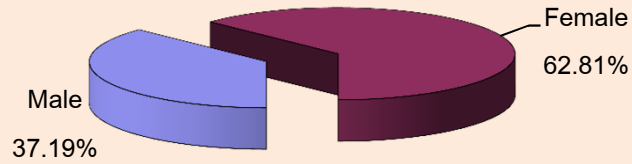
Type of Officials	Positions		Officials	
	Number	%	Number	%
Central and Provincial Administration	1,138,757	80.35	1,097,662	84.93
● Ordinary Civil Servants	382,585	26.99	362,553	28.05
● Teachers	468,446	33.05	458,688	35.49
● University Officials	40,664	2.87	39,184	3.03
● Legislative Body Officials	3,332	0.24	2,840	0.22
● Police Officials	218,676	15.43	213,664	16.53
● Public Prosecutors	3,358	0.24	3,158	0.24
● Judges	7,349	0.52	4,277	0.33
● Autonomous Organization Officials	14,347	1.01	13,298	1.03
Local Administration	278,505	19.65	194,804	15.07
● Bangkok Metropolitan Officials	39,415	2.78	37,389	2.89
- Ordinary	23,579	1.66	21,845	1.69
- Teachers	15,836	1.12	15,544	1.20
● Provincial Administration Organization Off.	15,506	1.09	8,489	0.66
● Sub-district Administration Organization Off.	97,740	6.90	66,164	5.12
● Municipal Officials	125,844	8.88	82,762	6.40
- Ordinary	95,518	6.74	55,568	4.30
- Teachers	30,326	2.14	27,194	2.10
Total	1,417,262	100.00	1,292,466	100.00

Ordinary Civil Servants by Ministry, Fiscal Year 2010

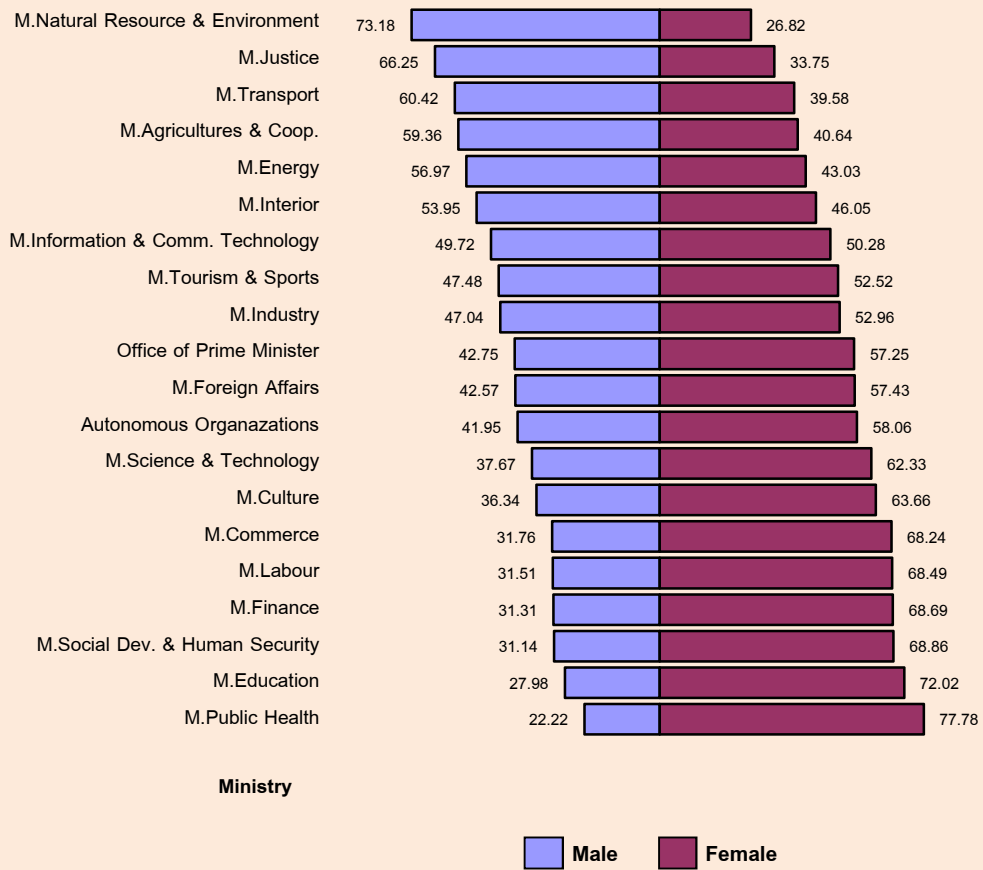


Ministry	Positions		Officials	
	Number	%	Number	%
Office of the Prime Minister	7,232	1.89	6,528	1.80
M. of Finance	31,983	8.36	30,296	8.36
M. of Foreign Affairs	1,758	0.46	1,562	0.43
M. of Tourism and Sports	732	0.19	636	0.18
M. of Social Development and Human Security	3,675	0.96	3,381	0.93
M. of Agriculture and Cooperatives	38,208	9.99	35,670	9.84
M. of Transport	15,586	4.07	14,333	3.95
M. of Natural Resource and Environment	11,672	3.05	10,403	2.87
M. of Information and Communications Tech.	2,107	0.55	1,947	0.54
M. of Energy	1,408	0.37	1,241	0.34
M. of Commerce	3,809	1.00	3,526	0.97
M. of Interior	43,380	11.34	40,762	11.24
M. of Justice	18,470	4.83	17,396	4.80
M. of Labour	6,666	1.74	6,183	1.71
M. of Culture	3,783	0.99	3,500	0.97
M. of Science and Technology	825	0.22	746	0.21
M. of Education	3,988	1.04	3,624	1.00
M. of Public Health	176,612	46.16	171,070	47.18
M. of Industry	3,708	0.97	3,399	0.94
Autonomous Organizations	6,983	1.83	6,350	1.75
Total	382,585	100.00	362,553	100.00

Ordinary Civil Servants by Ministry and Sex, Fiscal Year 2010



by Ministry and Sex

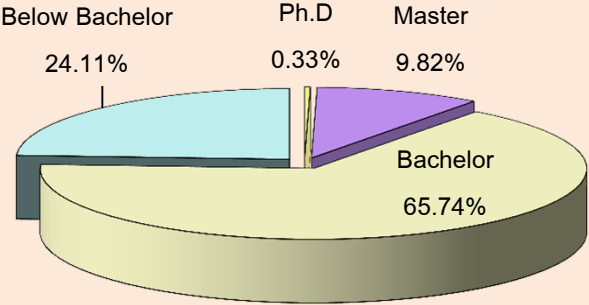


Ordinary Civil Servants by Ministry and Sex, Fiscal Year 2010

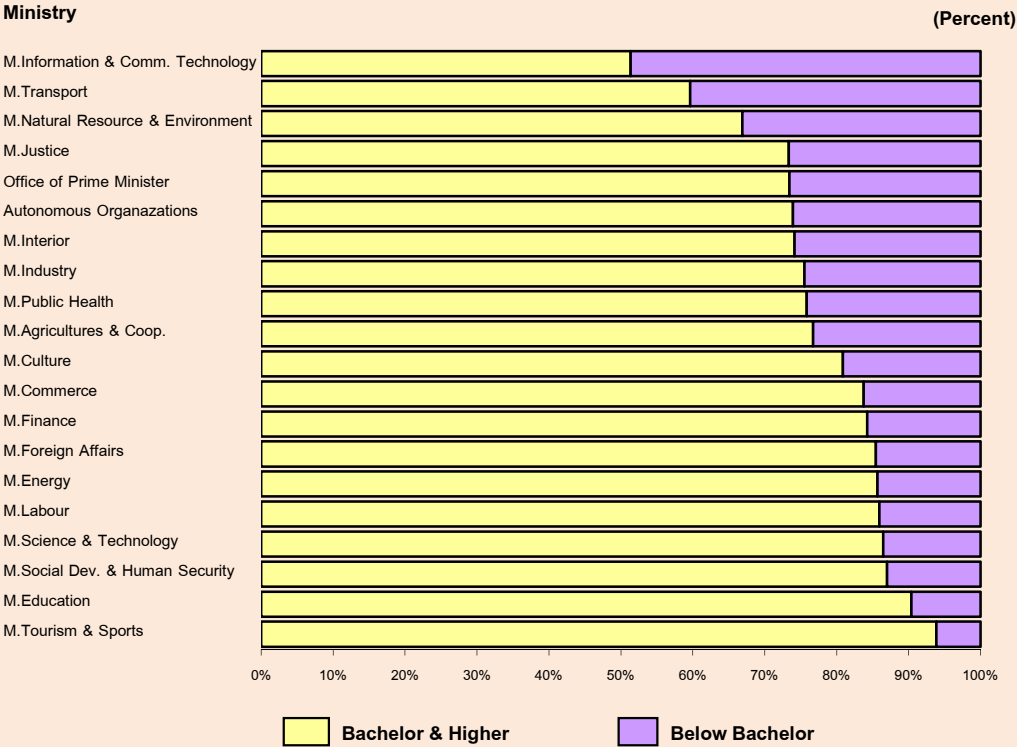
Ministry	Total	Male	Female	% Female
1 Office of the Prime Minister	6,528	2,791	3,737	57.25
2 Ministry of Finance	30,296	9,486	20,810	68.69
3 Ministry of Foreign Affairs	1,562	665	897	57.43
4 Ministry of Tourism and Sports	636	302	334	52.52
5 Ministry of Social Development and Human Security	3,381	1,053	2,328	68.86
6 Ministry of Agriculture and Cooperatives	35,670	21,172	14,498	40.64
7 Ministry of Transport	14,333	8,660	5,673	39.58
8 Ministry of Natural Resource and Environment	10,403	7,613	2,790	26.82
9 Ministry of Information and Communications Technology	1,947	968	979	50.28
10 Ministry of Energy	1,241	707	534	43.03
11 Ministry of Commerce	3,526	1,120	2,406	68.24
12 Ministry of Interior	40,762	21,990	18,772	46.05
13 Ministry of Justice	17,396	11,525	5,871	33.75
14 Ministry of Labour	6,183	1,948	4,235	68.49
15 Ministry of Culture	3,500	1,272	2,228	63.66
16 Ministry of Science and Technology	746	281	465	62.33
17 Ministry of Education	3,624	1,014	2,610	72.02
18 Ministry of Public Health	171,070	38,014	133,056	77.78
19 Ministry of Industry	3,399	1,599	1,800	52.96
20 Autonomous Organizations	6,350	2,663	3,687	58.06
Total	362,553	134,843	227,710	62.81

(Unit : Person)

Ordinary Civil Servants by Education, Fiscal Year 2010



by Ministry and Education

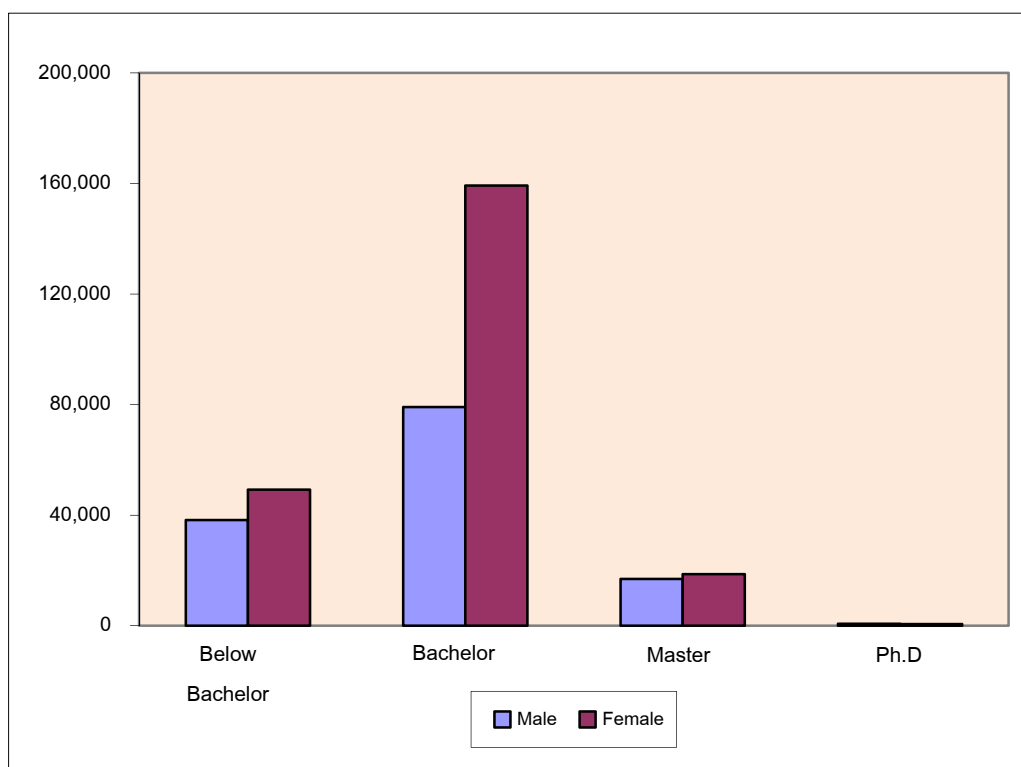


Ordinary Civil Servants by Ministry and Education, Fiscal Year 2010

Ministry	Total	Education Level					
		Ph.D	Master	Bachelor	Bachelor & Higher	Below Bachelor	% Bachelor & Higher
1 Office of the Prime Minister	6,528	69	1,855	2,869	4,793	1,735	73.42
2 M. of Finance	30,296	65	6,070	19,386	25,521	4,775	84.24
3 M. of Foreign Affairs	1,562	97	730	508	1,335	227	85.47
4 M. of Tourism and Sports	636	4	283	310	597	39	93.87
5 M. of Social Development and Human Security	3,381	4	689	2,249	2,942	439	87.02
6 M. of Agricultures and Cooperatives	35,670	189	5,341	21,840	27,370	8,300	76.73
7 M. of Transport	14,333	55	1,304	7,190	8,549	5,784	59.65
8 M. of Natural Resource and Environment	10,403	105	1,954	4,901	6,960	3,443	66.90
9 M. of Information and Communications Tech.	1,947	7	299	694	1,000	947	51.36
10 M. of Energy	1,241	27	353	683	1,063	178	85.66
11 M. of Commerce	3,526	22	1,094	1,838	2,954	572	83.78
12 M. of Interior	40,762	28	6,214	23,984	30,226	10,536	74.15
13 M. of Justice	17,396	24	2,536	10,200	12,760	4,636	73.35
14 M. of Labour	6,183	8	726	4,580	5,314	869	85.95
15 M. of Culture	3,500	15	718	2,098	2,831	669	80.89
16 M. of Science and Technology	746	32	200	413	645	101	86.46
17 M. of Education	3,624	81	1,252	1,943	3,276	348	90.40
18 M. of Public Health	171,070	319	2,534	126,883	129,736	41,334	75.84
19 M. of Industry	3,399	20	535	2,012	2,567	832	75.52
20 Autonomous Organizations	6,350	33	907	3,754	4,694	1,656	73.92
Total	362,553	1,204	35,594	238,335	275,133	87,420	
Percent	100.00	0.33	9.82	65.74	75.89	24.11	75.89

(Unit : Person)

Ordinary Civil Servants by Education and Sex, Fiscal Year 2010



Education Level	Total	Male	Female	% Female
Below Bachelor	87,420	38,247	49,173	56.25
Bachelor	238,335	79,066	159,269	66.83
Master	35,594	16,882	18,712	52.57
Ph.D	1,204	648	556	46.18
Total	362,553	134,843	227,710	62.81

(Unit : Person)

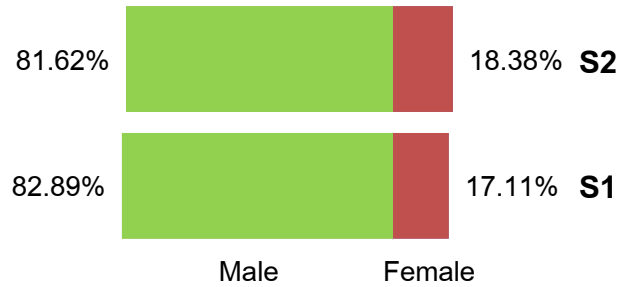
Ordinary Civil Servants by Ministry and Position Category and Level, Fiscal Year 2010

Ministry	Total	%	General Positions					Knowledge Worker Positions						Managerial Positions			Executive Positions		
			O1	O2	O3	O4	Total	K1	K2	K3	K4	K5	Total	M1	M2	Total	S1	S2	Total
1 Office of the Prime Minister	6,528	1.80	433	1,523	152		2,108	891	2,159	928	123	39	4,140	94	115	209	5	66	71
2 M. of Finance	30,296	8.36	1,636	8,928	292		10,856	2,672	14,733	1,374	84	16	18,879	130	387	517	25	19	44
3 M. of Foreign Affairs	1,562	0.43	6	387	3		396	316	503	121	2		942	51	7	58	79	87	166
4 M. of Tourism and Sports	636	0.18	20	77	2		99	103	280	100	3		486	33	10	43	3	5	8
5 M. of Social Development and Human Security	3,381	0.93	188	732	13		933	326	1,547	363	13	1	2,250	77	100	177	8	13	21
6 M. of Agriculture and Cooperatives	35,670	9.84	1,903	10,566	2,262		14,731	4,249	12,786	2,866	157	2	20,060	570	242	812	37	30	67
7 M. of Transport	14,333	3.95	1,535	8,039	870		10,444	900	1,961	605	78	6	3,550	191	115	306	17	16	33
8 M. of Natural Resource and Environment	10,403	2.87	364	4,391	636		5,391	1,043	2,818	880	17		4,758	94	119	213	22	19	41
9 M. of Information and Communications Tech.	1,947	0.54	109	738	159		1,006	231	482	103	8		824	84	21	105	6	6	12
10 M. of Energy	1,241	0.34	48	239	65		352	231	355	191	23		800	34	34	68	9	12	21
11 M. of Commerce	3,526	0.97	163	529	29		721	508	1,331	724	28	3	2,594	112	62	174	21	16	37
12 M. of Interior	40,762	11.24	1,699	13,061	643		15,403	5,556	15,858	1,962	37	7	23,420	1,191	464	1,655	187	97	284
13 M. of Justice	17,396	4.80	2,120	5,818	76		8,014	2,383	5,540	900	35	2	8,860	324	151	475	25	22	47
14 M. of Labour	6,183	1.71	262	996	5		1,263	667	3,467	369	8	3	4,514	310	70	380	12	14	26
15 M. of Culture	3,500	0.97	182	574	81		837	368	1,859	283	21	1	2,532	21	93	114	7	10	17
16 M. of Science and Technology	746	0.21	35	101	3		139	191	238	147	6	1	583	4	10	14	3	7	10
17 M. of Education	3,624	1.00	102	547	42		691	546	1,340	917	43	9	2,855		42	42	3	33	36
18 M. of Public Health	171,070	47.18	5,969	30,323	1,210		37,502	21,877	98,946	10,104	2,156	112	133,195	73	252	325	23	25	48
19 M. of Industry	3,399	0.94	86	804	34		924	339	1,373	537	21	1	2,271	56	113	169	17	18	35
20 Autonomous Organizations	6,350	1.75	1,115	1,275	172		2,562	1,527	1,697	299	39	14	3,576	98	30	128	17	67	84
Total	362,553	100.00	17,975	89,648	6,749	0	114,372	44,924	169,273	23,773	2,902	217	241,089	3,547	2,437	5,984	526	582	1,108
%	196.09		4.96	24.73	1.86	0.00	31.55	12.39	46.69	6.56	0.80	0.06	66.50	0.98	0.67	1.65	0.15	0.16	0.31

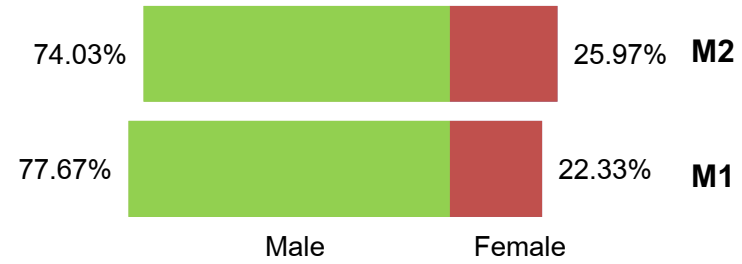
(Unit : Person)

Ordinary Civil Servants by Position Category and Level and Sex, Fiscal Year 2010

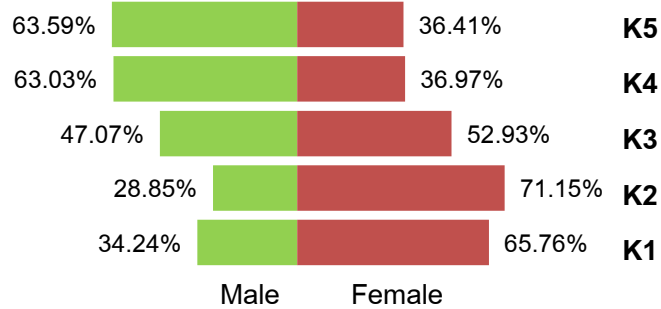
Executive Positions



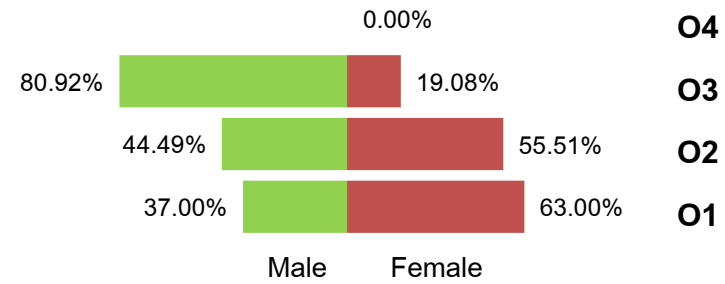
Managerial Positions



Knowledge Worker Positions



General Positions

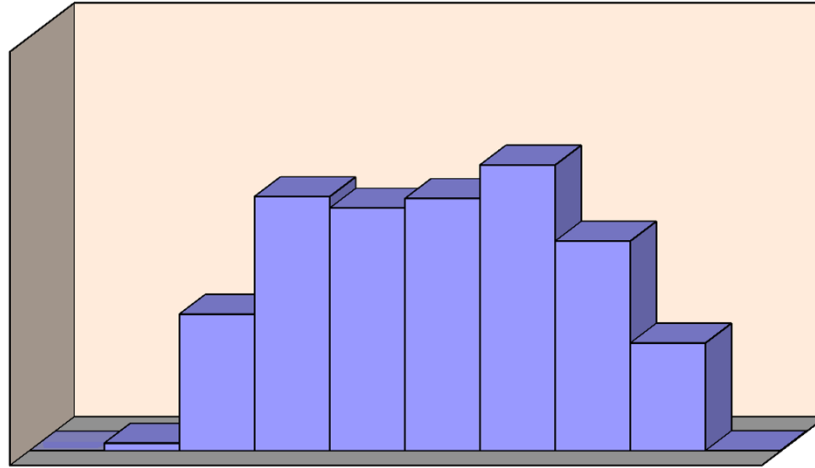


**Ordinary Civil Servants by Position Category and Level and Sex,
Fiscal Year 2010**

Position Category and Level	Number of Position	Person			
		Total	Male	Female	% Female
Executive Positions	1,137	1,108	911	197	17.78
Higher Level	598	582	475	107	18.38
Primary Level	539	526	436	90	17.11
Managerial Positions	6,195	5,984	4,559	1,425	23.81
Higher Level	2,525	2,437	1,804	633	25.97
Primary Level	3,670	3,547	2,755	792	22.33
Knowledge Worker Positions	252,869	241,089	77,379	163,710	67.90
Advisory Level	355	217	138	79	36.41
Expert Level	3,711	2,902	1,829	1,073	36.97
Senior Professional Level	26,738	23,773	11,189	12,584	52.93
Professional Level	174,088	169,273	48,842	120,431	71.15
Practitioner Level	47,977	44,924	15,381	29,543	65.76
General Positions	122,384	114,372	51,994	62,378	54.54
Highly Skilled Level					
Senior Level	7,123	6,749	5,461	1,288	19.08
Experienced Level	91,335	89,648	39,882	49,766	55.51
Operational Level	23,926	17,975	6,651	11,324	63.00
Total	382,585	362,553	134,843	227,710	62.81

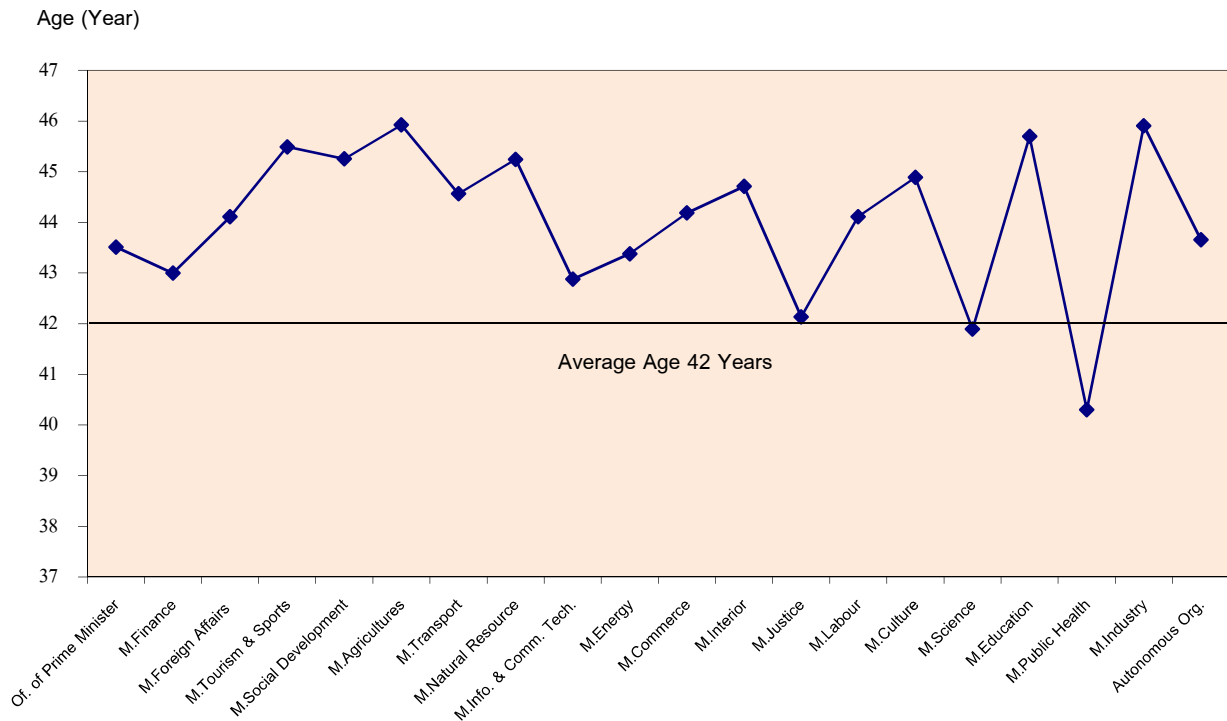
Ordinary Civil Servants by Age Group, Fiscal Year 2010

by Age Group



AgeGroup	<21	21-25	26-30	31-35	36-40	41-45	46-50	51-55	56-60	>60
Percent	0.001	1.52	9.13	16.97	16.21	16.83	19.07	14.01	7.21	0.034

Average Age by Ministry



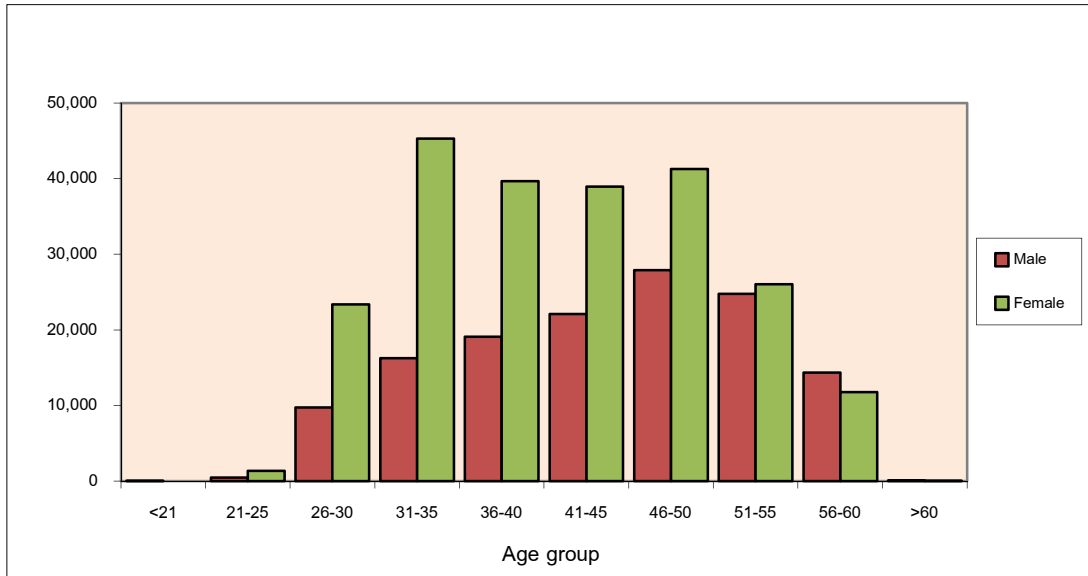
Ordinary Civil Servants by Ministry and Age group, Fiscal Year 2010

Ministry	Total	Age group (year)										Average
		<21	21-25	26-30	31-35	36-40	41-45	46-50	51-55	56-60	>60	Age
1 Office of the Prime Minister	6,528	1	30	612	869	953	1,068	1,306	1,014	675		43.51
2 M. of Finance	30,296		110	2,154	5,282	4,747	5,159	5,920	4,545	2,379		43.00
3 M. of Foreign Affairs	1,562		10	180	183	185	236	281	278	209		44.11
4 M. of Tourism and Sports	636		2	46	76	78	81	113	137	103		45.49
5 M. of Social Development and Human Security	3,381		14	263	379	394	479	599	812	441		45.25
6 M. of Agricultures and Cooperatives	35,670		110	2,356	3,602	3,784	4,508	8,011	8,754	4,545		45.92
7 M. of Transport	14,333		50	936	1,608	1,534	3,231	3,251	2,240	1,483		44.57
8 M. of Natural Resource and Environment	10,403		12	471	870	1,473	2,183	2,608	1,740	1,046		45.24
9 M. of Information and Communications Tech.	1,947		21	169	294	325	305	374	302	157		42.88
10 M. of Energy	1,241		4	136	172	166	178	252	219	114		43.38
11 M. of Commerce	3,526		16	277	582	421	493	575	746	416		44.18
12 M. of Interior	40,762	1	132	2,353	4,274	5,946	7,639	8,916	7,524	3,977		44.71
13 M. of Justice	17,396		63	1,634	3,232	3,006	2,771	3,041	2,447	1,202		42.13
14 M. of Labour	6,183		19	266	709	1,095	1,363	1,271	915	545		44.11
15 M. of Culture	3,500		9	227	330	553	533	738	780	330		44.89
16 M. of Science & Technology	746		6	89	125	140	97	120	105	64		41.89
17 M. of Education	3,624		21	285	355	395	485	739	763	581		45.70
18 M. of Public Health	171,070		1,223	19,996	37,287	32,165	28,660	29,101	15,702	6,934	2	40.30
19 M. of Industry	3,399		10	177	357	439	452	742	727	495		45.91
20 Autonomous Organizations*	6,350		17	484	949	961	1,113	1,198	1,052	454	122	43.66
Total	362,553	2	1,879	33,111	61,535	58,760	61,034	69,156	50,802	26,150	124	42.44
Percent	100.00	0.001	0.52	9.13	16.97	16.21	16.83	19.07	14.01	7.21	0.03	0

Notes : * - Office of His Majesty's Principal Private Secretary and Bureau of Royal Household have no limit of retirement.

(Unit : Person)

Ordinary Civil Servants by Sex and Age group, Fiscal Year 2010

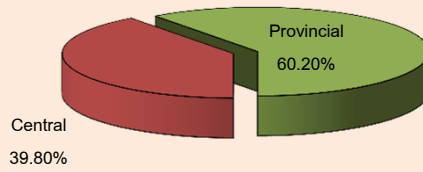


Age group	Total	Male	Female	% Female
<21	2	2		
21-25	1,879	502	1,377	73.28
26-30	33,111	9,749	23,362	70.56
31-35	61,535	16,259	45,276	73.58
36-40	58,760	19,105	39,655	67.49
41-45	61,034	22,101	38,933	63.79
46-50	69,156	27,905	41,251	59.65
51-55	50,802	24,753	26,049	51.28
56-60	26,150	14,374	11,776	45.03
>60	124	93	31	25.00
Total	362,553	134,843	227,710	62.81
Average Age	42.44	44.41	41.28	

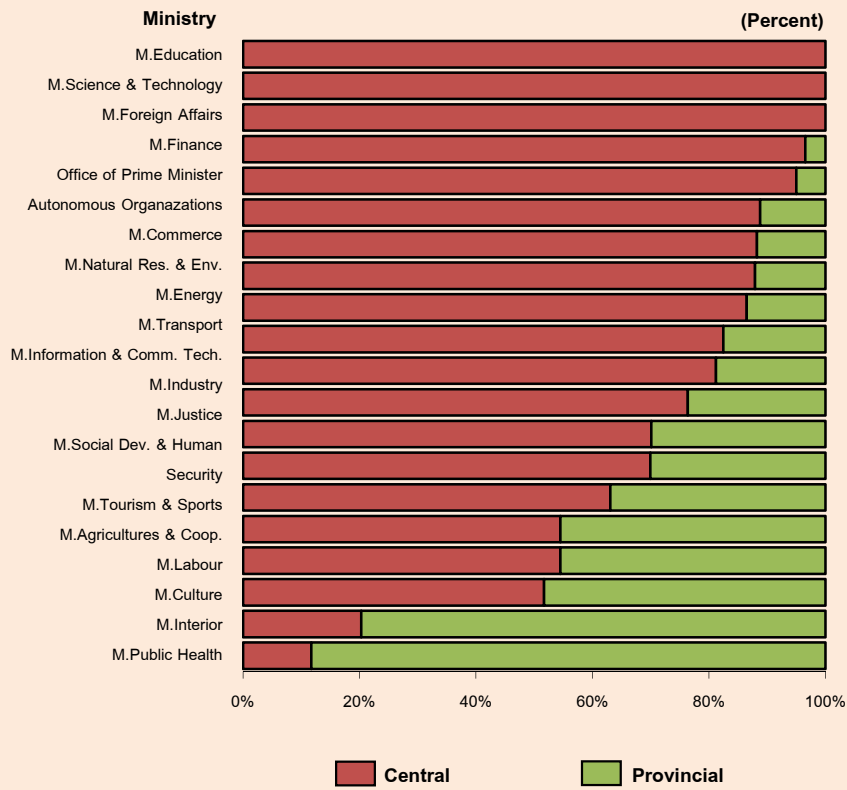
Notes : Office of His Majesty's Principal Private Secretary and Bureau of Royal Household have no limit of retirement.

(Unit : Person)

Ordinary Civil Servants by Type of Government Administration, Fiscal Year 2010



Type of Government Administration by Ministry

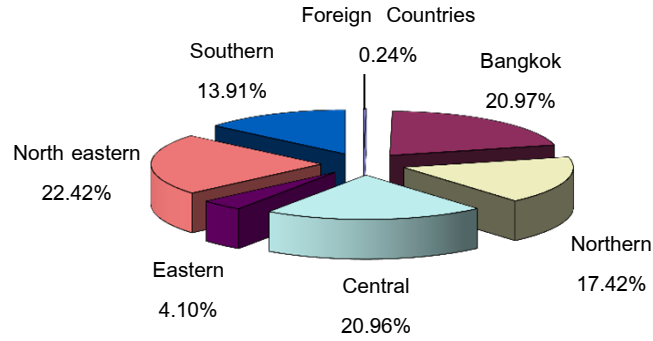


Ordinary Civil Servants by Ministry and Type of Government Administration, Fiscal Year 2010

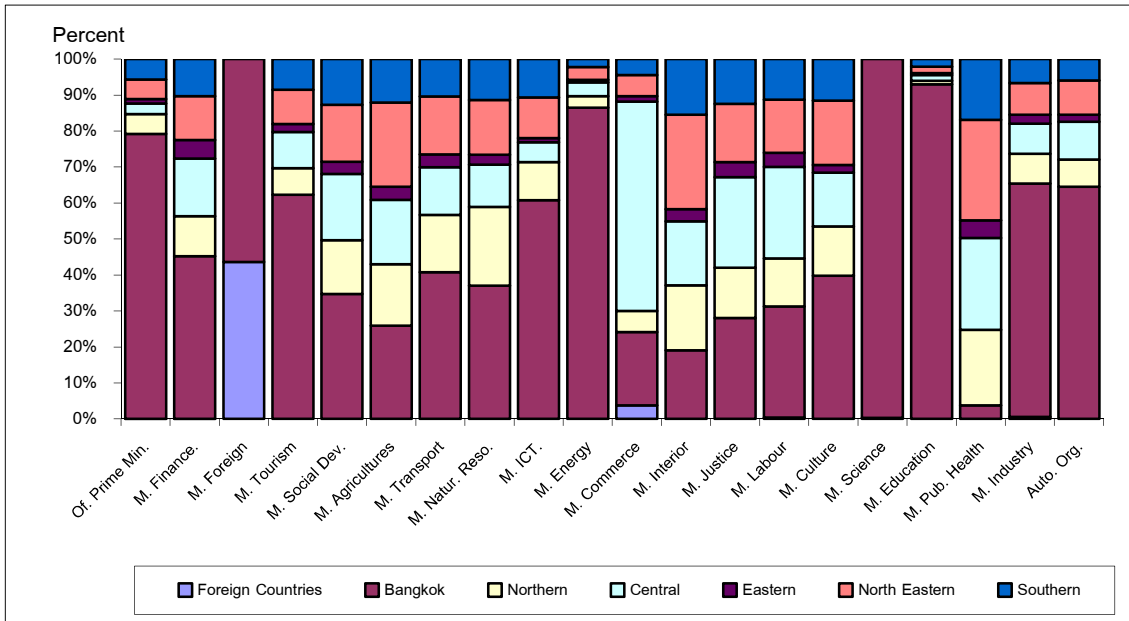
Ministry	Total	Central	Provincial	% Provincial
1 Office of the Prime Minister	6,528	6,202	326	4.99
2 M. of Finance	30,296	29,254	1,042	3.44
3 M. of Foreign Affairs	1,562	1,562		
4 M. of Tourism and Sports	636	401	235	36.95
5 M. of Social Development and Human Security	3,381	2,364	1,017	30.08
6 M. of Agricultures and Cooperatives	35,670	19,445	16,225	45.49
7 M. of Transport	14,333	11,820	2,513	17.53
8 M. of Natural Resource and	10,403	9,149	1,254	12.05
9 M. of Information and Communications Tech.	1,947	1,581	366	18.80
10 M. of Energy	1,241	1,073	168	13.54
11 M. of Commerce	3,526	3,112	414	11.74
12 M. of Interior	40,762	8,287	32,475	79.67
13 M. of Justice	17,396	12,194	5,202	29.90
14 M. of Labour	6,183	3,369	2,814	45.51
15 M. of Culture	3,500	1,810	1,690	48.29
16 M. of Science and Technology	746	746		
17 M. of Education	3,624	3,624		
18 M. of Public Health	171,070	20,055	151,015	88.28
19 M. of Industry	3,399	2,596	803	23.62
20 Autonomous Organizations	6,350	5,638	712	11.21
Total	362,553	144,282	218,271	60.20

(Unit : Person)

Ordinary Civil Servants by Location, Fiscal Year 2010



Ordinary Civil Servants by Ministry and Location, Fiscal Year 2010



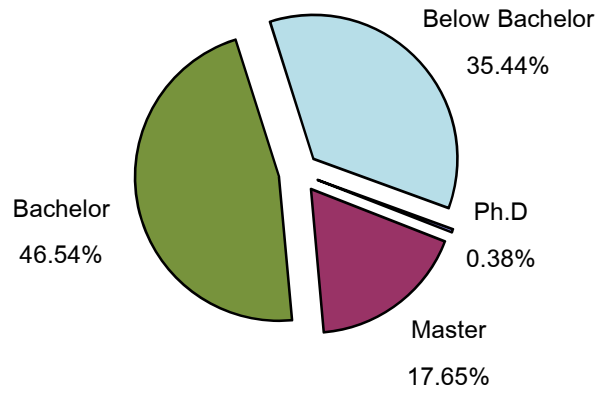
Ordinary Civil Servants by Ministry and Location, Fiscal Year 2010

Ministry	Total	Foreign Countries	Bangkok	Northern	Central	Eastern	North eastern	Southern
1 Of. Prime Min.	6,528	2	5,170	358	191	84	350	373
2 M. Finance	30,296	7	13,691	3,363	4,870	1,542	3,710	3,113
3 M. Foreign	1,562	681	881	0	0	0	0	0
4 M. Tourism	636		396	47	64	14	61	54
5 M. Social Dev.	3,381		1,174	504	625	113	535	430
6 M. Agricultures	35,670		9,249	6,083	6,386	1,284	8,371	4,297
7 M. Transport	14,333		5,842	2,281	1,902	512	2,302	1,494
8 M. Natur. Reso.	10,403		3,855	2,273	1,225	285	1,579	1,186
9 M. ICT.	1,947		1,183	207	107	23	220	207
10 M. Energy	1,241		1,073	40	48	9	44	27
11 M. Commerce	3,526	133	717	208	2,050	55	206	157
12 M. Interior	40,762		7,761	7,356	7,278	1,384	10,690	6,293
13 M. Justice	17,396		4,881	2,435	4,366	736	2,810	2,168
14 M. Labour	6,183	22	1,911	823	1,575	242	915	695
15 M. Culture	3,500		1,393	480	523	75	626	403
16 M. Science	746	2	744	0	0	0	0	0
17 M. Education	3,624		3,369	37	59	19	63	77
18 M. Public Health	171,070		6,420	35,892	43,757	8,275	47,888	28,838
19 M. Industry	3,399	18	2,205	282	284	85	300	225
20 Autonomous Org.	6,350		4,096	481	668	122	607	376
Total	362,553	865	76,011	63,150	75,978	14,859	81,277	50,413
Percent	100.00	0.24	20.97	17.42	20.96	4.10	22.42	13.91

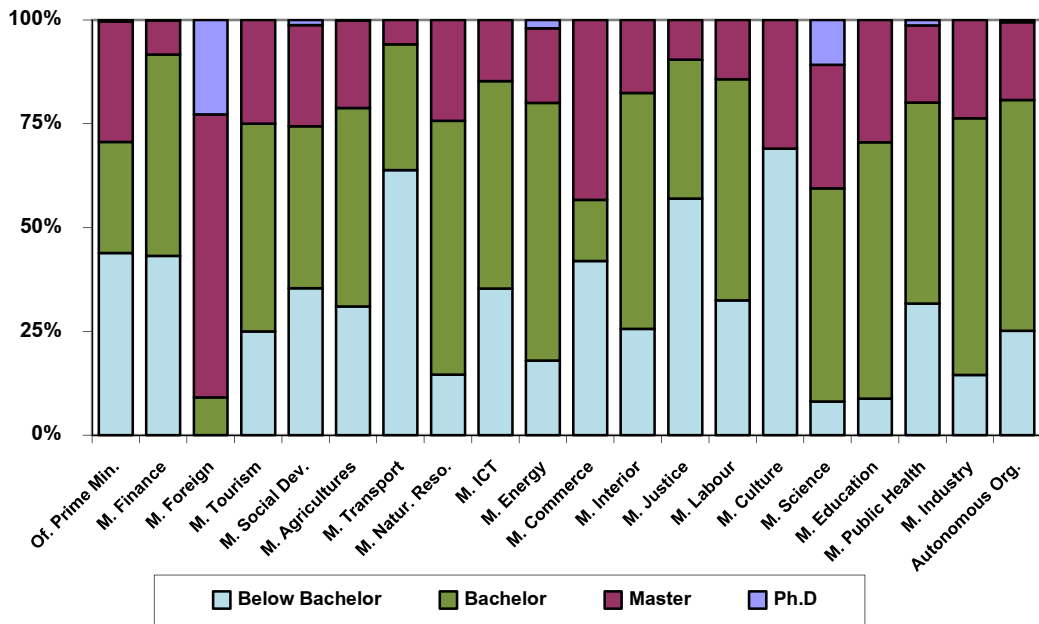
(Unit : Person)

New Recruits, Fiscal Year 2009

by Education Level



by Ministry and Education Level



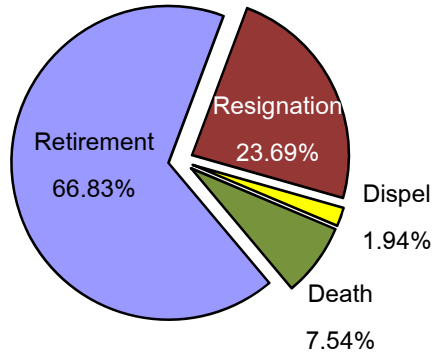
New Recruits by Ministry and Education Level, Fiscal Year 2009

<i>Ministry</i>	<i>Total</i>	<i>Education Level</i>					<i>% Bachelor & Higher</i>
		<i>Ph.D</i>	<i>Master</i>	<i>Bachelor</i>	<i>Below Bachelor</i>		
Office of the Prime Minister	228	1	66	61	100	56.14	
M. of Finance	824	1	68	399	356	56.80	
M. of Foreign Affairs	22	5	15	2		100.00	
M. of Tourism and Sports	12		3	6	3	75.00	
M. of Social Development and Human Security	82	1	20	32	29	64.63	
M. of Agriculture and Cooperatives	1,041	2	219	497	323	68.97	
M. of Transport	357		21	108	228	36.13	
M. of Natural Resource and Environment	206		50	126	30	85.44	
M. of Information and Communications Tech.	34		5	17	12	64.71	
M. of Energy	50	1	9	31	9	82.00	
M. of Commerce	143		62	21	60	58.04	
M. of Interior	1,137		200	646	291	74.41	
M. of Justice	739		71	247	421	43.03	
M. of Labour	77		11	41	25	67.53	
M. of Culture	29		9		20	31.03	
M. of Science and Technology	37	4	11	19	3	91.89	
M. of Education	285		84	176	25	91.23	
M. of Public Health	543	7	101	263	172	68.32	
M. of Industry	76		18	47	11	85.53	
Autonomous Organizations	187	1	35	104	47	74.87	
Total	6,109	23	1,078	2,843	2,165	64.56	

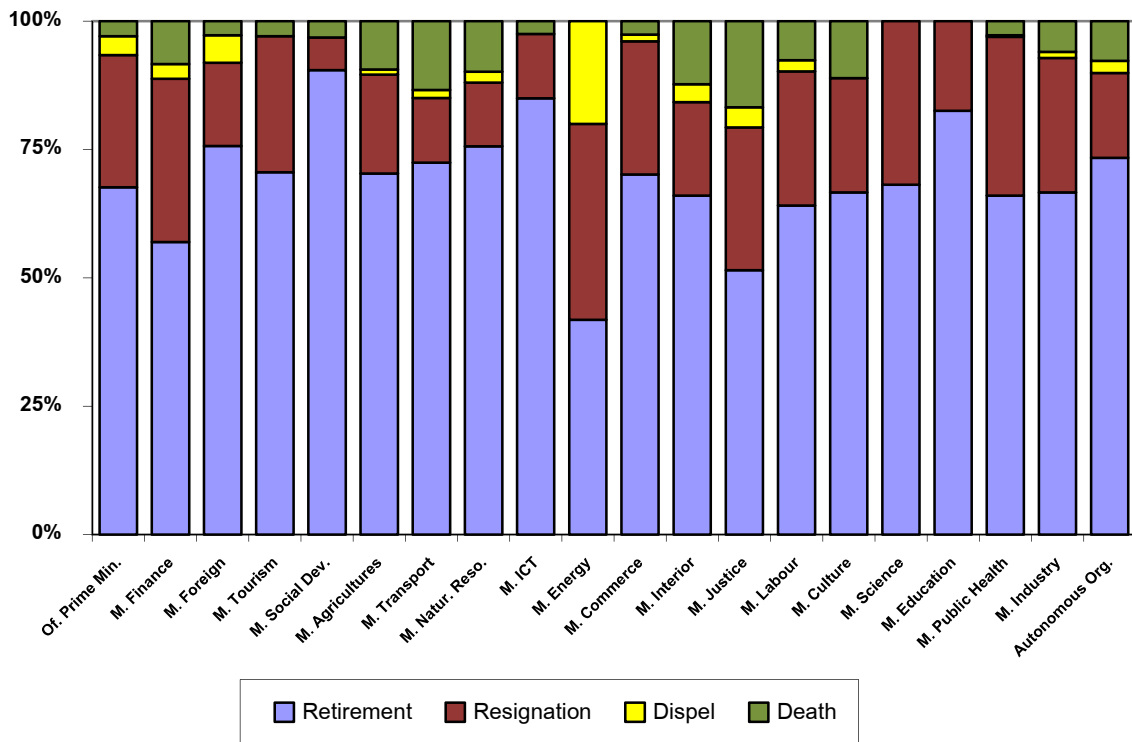
(Unit : Person)

Officials Separating from the Service, Fiscal Year 2009

by Type of Separation



by Ministry and Separation



**Officials Separating from the Service by Ministry and Type of Seperate,
Fiscal Year 2009**

<i>Ministry</i>	<i>Total</i>	<i>Type of Separation</i>			
		<i>Retirement</i>	<i>Resignation</i>	<i>Dispel</i>	<i>Death</i>
Office of the Prime Minister	136	92	35	5	4
M. of Finance	456	260	145	13	38
M. of Foreign Affairs	37	28	6	2	1
M. of Tourism and Sports	34	24	9		1
M. of Social Development and Human Security	63	57	4		2
M. of Agricultures and Cooperatives	576	405	111	6	54
M. of Transport	374	271	47	6	50
M. of Natural Resource and Environment	234	177	29	5	23
M. of Information and Communications Tech.	40	34	5		1
M. of Energy	55	23	21	11	
M. of Commerce	77	54	20	1	2
M. of Interior	742	490	135	26	91
M. of Justice	227	117	63	9	38
M. of Labour	92	59	24	2	7
M. of Culture	45	30	10		5
M. of Science and Technology	22	15	7		
M. of Education	63	52	11		
M. of Public Health	1,433	946	443	5	39
M. of Industry	84	56	22	1	5
Autonomous Organizations	169	124	28	4	13
Total	4,959	3,314	1,175	96	374

(Unit : Person)

Ordinary Civil Servants by Department and Position Category and Level, Fiscal Year 2010

Department	Total	Position Category and Level																
		General Positions					Knowledge Worker Positions						Managerial Positions			Executive Positions		
		O1	O2	O3	O4	Total	K1	K2	K3	K4	K5	Total	M1	M2	Total	S1	S2	Total
Off. of the Prime Minister	6,528	433	1,523	152	0	2,108	891	2,159	928	123	39	4,140	94	115	209	5	66	71
<i>Off. of the Permanent Secretary</i>	417	26	49	1		76	69	178	57	10		314	3	8	11		16	16
<i>The Public Relations Dep.</i>	1,958	172	769	99		1,040	111	546	159	5		821	80	13	93	3	1	4
<i>Off. of the Consumer Protection Board</i>	98	3	4	1		8	57	13	10			80	5	2	7	2	1	3
<i>The Secretariat of the Prime Minister</i>	276	25	65	6		96	30	97	30	2	3	162		10	10		8	8
<i>The Secretariat of the Cabinet</i>	304	23	91	4		118	39	74	56	4	2	175	1	5	6		5	5
<i>National Intelligence Agency</i>	840	58	216	27		301	64	334	104	12	4	518	2	14	16		5	5
<i>The Bureau of the Budget</i>	836	14	106	8		128	75	433	134	33	7	682		19	19		7	7
<i>Off. of the National Security Council</i>	105	2	19	2		23	12	36	20	6		74	1	3	4		4	4
<i>Off. of the Council of State</i>	331	26	39	2		67	108	76	60		10	254		6	6		4	4
<i>Off. of the Civil Service Commission</i>	558	52	95	1		148	96	113	151	25	5	390	2	13	15		5	5
<i>Off. of the National Economic and Social Development Board</i>	500	12	51			63	85	210	94	20	6	415		15	15		7	7
<i>Off. of the Public Sector Development Commission</i>	305	20	19	1		40	145	49	53	6	2	255		7	7		3	3
Ministry of Finance	30,296	1,636	8,928	292	0	10,856	2,672	14,733	1,374	84	16	18,879	130	387	517	25	19	44
<i>Off. of the Minister</i>	11		1			1	2	5	2			9		1	1			0
<i>Off. of the Permanent Secretary</i>	196	6	54	2		62	33	60	20	3	3	119		4	4		11	11
<i>The Treasury Dep.</i>	1,271	140	297	113		550	238	322	56	3	2	621	50	46	96	3	1	4
<i>The Comptroller General's Dep.</i>	1,843	38	434	25		497	305	882	48	13	1	1,249	3	89	92	4	1	5
<i>The Customs Dep.</i>	4,363	82	1,436			1,518	760	1,920	91	10	1	2,782	23	35	58	4	1	5
<i>The Excise Department</i>	3,364	246	1,306	141		1,693	157	1,313	99	5	2	1,576	48	42	90	4	1	5
<i>The Revenue Dep.</i>	18,754	1,124	5,363	11		6,498	1,008	10,080	972	39	3	12,102		149	149	4	1	5
<i>The State Enterprise Policy Off.</i>	125		2			2	76	24	10	3	1	114	2	5	7	1	1	2
<i>Public Debt Management Off.</i>	134		5			5	53	45	16	3	1	118	1	7	8	2	1	3
<i>The Fiscal Policy Off.</i>	235		30			30	40	82	60	5	2	189	3	9	12	3	1	4

Ordinary Civil Servants by Department and Position Category and Level, Fiscal Year 2010 (Con't)

Department	Total	Position Category and Level																
		General Positions					Knowledge Worker Positions						Managerial Positions			Executive Positions		
		O1	O2	O3	O4	Total	K1	K2	K3	K4	K5	Total	M1	M2	Total	S1	S2	Total
Ministry of Foreign Affairs	1,562	6	387	3	0	396	316	503	121	2	0	942	51	7	58	79	87	166
<i>Off. of the Minister</i>	7		3			3		3				3		1	1			0
<i>Off. of the Permanent Secretary</i>	1,071	3	288	3		294	190	328	112	2		632	3	6	9	60	76	136
<i>Dep. of Consular Affairs</i>	75	1	25			26	15	24	2			41	5		5	2	1	3
<i>Dep. of Protocol</i>	45	1	15			16	12	10				22	4		4	2	1	3
<i>Dep. of European Affairs</i>	33		5			5	11	10	1			22	4		4	1	1	2
<i>Dep. of International Economic Affairs</i>	48		8			8	15	16	2			33	4		4	2	1	3
<i>Dep. of Treaties and Legal Affairs</i>	43	1	6			7	11	15	3			29	4		4	2	1	3
<i>Dep. of Information</i>	42		8			8	10	16				26	5		5	2	1	3
<i>Dep. of International Organizations</i>	41		8			8	9	17				26	4		4	2	1	3
<i>Dep. of American and South Pacific Affairs</i>	34		4			4	12	12				24	4		4	1	1	2
<i>Dep. of ASEAN Affairs</i>	42		7			7	12	15				27	5		5	2	1	3
<i>Dep. of East Asian Affairs</i>	45		6			6	10	20	1			31	5		5	2	1	3
<i>Dep. of South Asian, Middle East and African Affairs</i>	36		4			4	9	17				26	4		4	1	1	2
Ministry of Tourism and Sports	636	20	77	2	0	99	103	280	100	3	0	486	33	10	43	3	5	8
<i>Off. of the Minister</i>	8		1			1		5	1			6		1	1			0
<i>Off. of the Permanent Secretary</i>	330	7	22			29	63	146	54	1		264	31	2	33		4	4
<i>Dep. of Physical Education ¹</i>	174	9	43	2		54	20	58	34			112	1	4	5	2	1	3
<i>Dep. of Tourism ²</i>	124	4	11			15	20	71	11	2		104	1	3	4	1		1
Ministry of Social Development and Human Security	3,381	188	732	13	0	933	326	1,547	363	13	1	2,250	77	100	177	8	13	21
<i>Off. of the Minister</i>	13	2	3			5	2	4	1			7		1	1			0
<i>Off. of the Permanent Secretary</i>	1,292	58	172	7		237	132	689	136	5	1	963	3	80	83		9	9
<i>Dep. of Social Development and Welfare</i>	1,557	78	521	3		602	100	638	128	2		868	70	13	83	3	1	4

Ordinary Civil Servants by Department and Position Category and Level, Fiscal Year 2010 (Con't)

Department	Total	Position Category and Level																
		General Positions					Knowledge Worker Positions						Managerial Positions			Executive Positions		
		O1	O2	O3	O4	Total	K1	K2	K3	K4	K5	Total	M1	M2	Total	S1	S2	Total
<i>Off. of Woman's Affairs and Family Development</i>	192	31	9			40	47	68	28	2		145	2	2	4	2	1	3
<i>Bureau of Welfare Promotion and Protection of Children, Youth, the Disadvantaged, and Older Persons</i>	273	16	22	3		41	39	124	57	3		223	2	4	6	2	1	3
<i>National office for Empowerment of Persons with Disabilities</i>	54	3	5			8	6	24	13	1		44			0	1	1	2
Ministry of Agricultures and Cooperatives	35,670	1,903	10,566	2,262	0	14,731	4,249	12,786	2,866	157	2	20,060	570	242	812	37	30	67
<i>Off. of the Minister</i>	12	3				3	1	4	3			8		1	1			0
<i>Off. of the Permanent Secretary</i>	1,199	74	248	5		327	152	562	45	1		760	82	13	95		17	17
<i>Royal Irrigation Dep.</i>	6,440	372	3,193	701		4,266	336	1,433	188	46	1	2,004	138	27	165	4	1	5
<i>Cooperative Auditting Dep.</i>	1,194		80	14		94	197	744	136	5		1,082	5	10	15	2	1	3
<i>Dep. of Fisheries</i>	2,698	394	708	414		1,516	284	564	217	17		1,082	68	28	96	3	1	4
<i>Dep. of Livestock Development</i>	4,451	360	1,776	709		2,845	320	612	543	26		1,501	67	33	100	4	1	5
<i>Land Development Dep.</i>	1,468	115	336	55		506	243	439	243	11		936	7	15	22	3	1	4
<i>Dep. of Agriculture</i>	2,071	102	529	31		662	461	435	471	17	1	1,385	6	14	20	3	1	4
<i>Dep. of Agriculture Extension</i>	9,418	261	1,978	50		2,289	1,373	5,276	381	2		7,032	64	29	93	3	1	4
<i>The Cooperative Promotion Dep.</i>	3,057	48	639	229		916	369	1,495	170	8		2,042	62	33	95	3	1	4
<i>Agriculture Land Reform Off.</i>	1,809	56	673	46		775	239	615	96	5		955	57	18	75	3	1	4
<i>National Bureau of Agricultural Commodity and Food Standards</i>	164	19				19	56	50	27	4		137	3	2	5	2	1	3
<i>Off. of Agriculture Economics</i>	605	29	124	4		157	82	181	159	8		430	1	13	14	3	1	4
<i>Rice Department</i>	840	32	252	4		288	80	307	149	7		543		6	6	2	1	3
<i>Department of Sericulture</i>	244	38	30			68	56	69	38			163	10		10	2	1	3

Ordinary Civil Servants by Department and Position Category and Level, Fiscal Year 2010 (Con't)

Department	Total	Position Category and Level																
		General Positions					Knowledge Worker Positions						Managerial Positions			Executive Positions		
		O1	O2	O3	O4	Total	K1	K2	K3	K4	K5	Total	M1	M2	Total	S1	S2	Total
Ministry of Transport	14,333	1,535	8,039	870	0	10,444	900	1,961	605	78	6	3,550	191	115	306	17	16	33
<i>Off. of the Minister</i>	21	2	4			6	2	10	2			14		1	1			0
<i>Off. of the Permanent Secretary</i>	284	21	58	3		82	69	74	34	4	1	182	5	5	10		10	10
<i>Marine Dep.</i>	1,046	79	442	11		532	73	378	36	3		490	8	12	20	3	1	4
<i>Dep. of Land Transport</i>	4,002	302	2,735	143		3,180	188	448	82	2		720	60	38	98	3	1	4
<i>Dep. of Civil Aviation</i> ³	483	37	168	13		218	67	135	24	3		229	30	3	33	2	1	3
<i>The Dep. of Highways</i>	6,616	984	3,597	612		5,193	364	594	283	60	4	1,305	86	27	113	4	1	5
<i>Dep. of Rural Roads</i>	1,712	102	1,017	87		1,206	94	253	126	4	1	478	1	23	24	3	1	4
<i>Off. of Transport and Traffic policy and planning</i>	169	8	18	1		27	43	69	18	2		132	1	6	7	2	1	3
Ministry of Natural Resource and Environment	10,403	364	4,391	636	0	5,391	1,043	2,818	880	17	0	4,758	94	119	213	22	19	41
<i>Off. of the Minister</i>	11					0	1	8	1			10		1	1			0
<i>Off. of the Permanent Secretary</i>	1,699	126	657	143		926	159	430	73	4		666	45	52	97		10	10
<i>Pollution Control Dep.</i>	279	9	20			29	71	144	28			243	2	2	4	2	1	3
<i>Dep. of Marine and Coastal Resources</i>	361	26	144	5		175	29	98	48	3		178	2	3	5	2	1	3
<i>Dep. of Mineral Resources</i>	355	7	95	2		104	60	112	67	1		240	5	3	8	2	1	3
<i>Dep. of Water Resources</i>	1,291	61	438	48		547	211	356	151	2		720	3	17	20	3	1	4
<i>Dep. of Groundwater Resources</i>	425	10	211	25		246	67	70	23	3		163	10	3	13	2	1	3
<i>Dep. of Environmental Quality Promotion</i>	155	2	14	1		17	17	78	35			130	3	2	5	2	1	3
<i>National Park, Wildlife and Plant Conservation Dep.</i>	3,611	69	1,769	266		2,104	258	942	273	1		1,474	2	27	29	3	1	4
<i>Off. of National Resources and Environmental Policy and Planning</i>	226	8	14			22	31	105	55			191	6	3	9	3	1	4
<i>Royal Forest Dep.</i>	1,990	46	1,029	146		1,221	139	475	126	3		743	16	6	22	3	1	4

Ordinary Civil Servants by Department and Position Category and Level, Fiscal Year 2010 (Con't)

Department	Total	Position Category and Level																	
		General Positions					Knowledge Worker Positions						Managerial Positions			Executive Positions			
		O1	O2	O3	O4	Total	K1	K2	K3	K4	K5	Total	M1	M2	Total	S1	S2	Total	
Ministry of Information and Communications Technology	1,947	109	738	159	0	1,006	231	482	103	8	0	824	84	21	105	6	6	12	
<i>Off. of the Minister</i>	8		1			1	3	1	2			6		1	1				0
<i>Off. of the Permanent Secretary</i>	280	11	30			41	92	99	30	5		226		8	8			5	5
<i>The Meteorological Dep.</i>	874	80	487	100		667	53	104	34			191	9	4	13	3			3
<i>National Statistical Off.</i>	785	18	220	59		297	83	278	37	3		401	75	8	83	3	1		4
Ministry of Energy	1,241	48	239	65	0	352	231	355	191	23	0	800	34	34	68	9	12	21	
<i>Off. of the Minister</i>	7	1	1			2		3	1			4		1	1				0
<i>Off. of the Permanent Secretary</i>	425	33	130	28		191	72	79	24	16		191	31	4	35			8	8
<i>Dep. of Mineral Fuels</i>	163	1	26			27	29	48	48	1		126		7	7	2	1		3
<i>Dep. of Energy Business</i>	180	3	15	3		21	27	70	47	4		148		8	8	2	1		3
<i>Dep. of Alternative Energy Development and Efficiency</i>	385	10	66	34		110	78	116	65	1		260	2	9	11	3	1		4
<i>Energy Policy and Planning Off.</i>	81		1			1	25	39	6	1		71	1	5	6	2	1		3
Ministry of Commerce	3,526	163	529	29	0	721	508	1,331	724	28	3	2,594	112	62	174	21	16	37	
<i>Off. of the Minister</i>	15		3			3		9	3			12			0				0
<i>Off. of the Permanent Secretary</i>	746	35	131			166	98	269	112	4	3	486	58	23	81	3	10		13
<i>Dep. of Foreign Trade</i>	578	41	116	5		162	68	234	94	5		401	6	5	11	3	1		4
<i>Dep. of Internal Trade</i>	807	52	130	22		204	147	255	186	3		591	3	5	8	3	1		4
<i>Dep. of Trade Negotiations</i>	208	13	26	1		40	34	64	54	6		158	1	5	6	3	1		4
<i>Dep. of Intellectual Property</i>	207	1	13			14	48	85	45	4		182	4	3	7	3	1		4
<i>Dep. of Business Development</i>	578	16	73	1		90	76	258	142	1		477	3	4	7	3	1		4
<i>Dep. of Export Promotion</i>	387	5	37			42	37	157	88	5		287	37	17	54	3	1		4

Ordinary Civil Servants by Department and Position Category and Level, Fiscal Year 2010 (Con't)

Department	Total	Position Category and Level																
		General Positions					Knowledge Worker Positions							Managerial Positions			Executive Positions	
		O1	O2	O3	O4	Total	K1	K2	K3	K4	K5	Total	M1	M2	Total	S1	S2	Total
Ministry of Interior	40,762	1,699	13,061	643	0	15,403	5,556	15,858	1,962	37	7	23,420	1,191	464	1,655	187	97	284
<i>Off. of the Minister</i>	17	1	3			4	1	8	3			12		1	1			0
<i>Off. of the Permanent Secretary</i>	2,747	111	659	34		804	288	937	364	8	3	1,600	6	76	82	169	92	261
<i>Dep. of Provincial Administration</i>	13,871	294	4,183	25		4,502	2,481	5,425	487	5		8,398	699	268	967	3	1	4
<i>The Community Development Dep.</i>	6,562	229	674	3		906	597	4,686	274	2		5,559	82	11	93	3	1	4
<i>Dep. of Lands</i>	10,521	872	5,580	364		6,816	893	2,334	216	4	1	3,448	208	45	253	3	1	4
<i>Dep. of Disaster Prevention and Mitigation</i>	1,862	17	544	117		678	195	649	246	1		1,091	73	16	89	3	1	4
<i>Dep. of Public Works and Town & Country Planning</i>	1,858	87	638	99		824	180	505	241	11	3	940	46	43	89	4	1	5
<i>Dep. of Local Administration</i>	3,324	88	780	1		869	921	1,314	131	6		2,372	77	4	81	2		2
Ministry of Justice	17,396	2,120	5,818	76	0	8,014	2,383	5,540	900	35	2	8,860	324	151	475	25	22	47
<i>Off. of the Minister</i>	10	3	2			5		2	2			4		1	1			0
<i>Off. of the Permanent Secretary</i>	261	22	24	3		49	76	87	25	2	1	191	4	6	10		11	11
<i>Dep. of Probation</i>	1,412	107	171	1		279	537	367	134	3		1,041	79	9	88	3	1	4
<i>Right and Liberties Protection Dep.</i>	100	12	4			16	19	44	10	3		76	3	2	5	2	1	3
<i>Legal Execution Dep.</i>	1,086	59	284	5		348	167	416	53	6		642	85	7	92	3	1	4
<i>The Dep. of Youth Observation and Protection</i>	1,509	103	120	1		224	479	608	120	1		1,208	52	21	73	3	1	4
<i>Dep. of Corrections</i>	10,935	1,724	5,076	63		6,863	598	3,109	207	2		3,916	74	77	151	4	1	5
<i>Special Investigation Dep.</i>	779	30	36	2		68	156	344	191	7		698	1	8	9	3	1	4
<i>Off. of Justice Affairs</i>	82	7	3			10	27	27	9	2		65	2	2	4	2	1	3
<i>Central Institute of Forensic Science</i>	202	13	4			17	94	62	18	5		179	1	2	3	2	1	3
<i>Off. of the Narcotics Control Board</i>	821	37	85	1		123	204	358	108	4	1	675	4	16	20	1	2	3
<i>Off. of the Public Sector Anti-Corruption Commission</i>	199	3	9			12	26	116	23			165	19		19	2	1	3

Ordinary Civil Servants by Department and Position Category and Level, Fiscal Year 2010 (Con't)

Department	Total	Position Category and Level																	
		General Positions					Knowledge Worker Positions							Managerial Positions			Executive Positions		
		O1	O2	O3	O4	Total	K1	K2	K3	K4	K5	Total	M1	M2	Total	S1	S2	Total	
Ministry of Labour	6,183	262	996	5	0	1,263	667	3,467	369	8	3	4,514	310	70	380	12	14	26	
<i>Off. of the Minister</i>	14		2			2		8	3			11		1	1				0
<i>Off. of the Permanent Secretary</i>	621	21	78			99	94	284	40	3	2	423	62	27	89		10	10	
<i>Dep. of Employment</i>	1,116	66	196			262	67	647	46	2		762	81	7	88	3	1	4	
<i>Dep. of Skill Development</i>	1,309	52	227			279	152	739	113			1,004	3	19	22	3	1	4	
<i>Dep. of Labour Protection and Welfare</i>	1,268	43	168	3		214	131	718	110	2		961	79	10	89	3	1	4	
<i>Social Security Off.</i>	1,855	80	325	2		407	223	1,071	57	1	1	1,353	85	6	91	3	1	4	
Ministry of Culture	3,500	182	574	81	0	837	368	1,859	283	21	1	2,532	21	93	114	7	10	17	
<i>Off. of the Minister</i>	5		1			1	1	2				3		1	1				0
<i>Off. of the Permanent Secretary</i>	1,828	7	12			19	131	1,427	163	4		1,725	13	65	78		6	6	
<i>The Religious Affairs Dep.</i>	82	4	14	1		19	20	33	5			58	2	1	3	1	1	2	
<i>The Fine Arts Dep.</i>	1,276	152	496	79		727	137	280	90	13	1	521		24	24	3	1	4	
<i>Off. of the National Culture Commission</i>	264	18	50	1		69	69	92	25	2		188	2	2	4	2	1	3	
<i>Off. of Contemporary Art and Culture</i>	45	1	1			2	10	25		2		37	4		4	1	1	2	
Ministry of Science and Technology	746	35	101	3	0	139	191	238	147	6	1	583	4	10	14	3	7	10	
<i>Off. of the Minister</i>	13		1			1	4	6	2			12			0				0
<i>Off. of the Permanent Secretary</i>	179	3	23	1		27	40	68	30	3	1	142	2	3	5		5	5	
<i>Dep. of Science Service</i>	342	10	42	1		53	84	107	89	2		282	1	3	4	2	1	3	
<i>Off. of Atoms for Peace</i>	212	22	35	1		58	63	57	26	1		147	1	4	5	1	1	2	
Ministry of Education	3,624	102	547	42	0	691	546	1,340	917	43	9	2,855	0	42	42	3	33	36	
<i>Off. of the Minister</i>	25	1	2			3	6	9	6			21		1	1				0
<i>Off. of the Permanent Secretary</i>	1,675	36	265	21		322	256	526	514	22	2	1,320		12	12	3	18	21	
<i>Off. of The Education Council</i>	172	6	15			21	38	65	39		1	143		5	5		3	3	

Ordinary Civil Servants by Department and Position Category and Level, Fiscal Year 2010 (Con't)

Department	Total	Position Category and Level																
		General Positions					Knowledge Worker Positions						Managerial Positions			Executive Positions		
		O1	O2	O3	O4	Total	K1	K2	K3	K4	K5	Total	M1	M2	Total	S1	S2	Total
<i>Off. of The Basic Education Commission</i>	1,056	28	168	16		212	112	423	273	17	5	830		10	10		4	4
<i>Off. of The Higher Education Commission</i>	356	14	39	2		55	89	162	36	1	1	289		8	8		4	4
<i>Off. of The Vocational Education Commission</i>	340	17	58	3		78	45	155	49	3		252		6	6		4	4
Ministry of Public Health	171,070	5,969	30,323	1,210	0	37,502	21,877	98,946	10,104	2,156	112	133,195	73	252	325	23	25	48
<i>Off. of the Minister</i>	24		7			7	3	13				16		1	1			0
<i>Off. of the Permanent Secretary</i>	153,436	5,475	26,815	1,105		33,395	19,532	90,439	8,137	1,681	40	119,829	24	171	195		17	17
<i>Dep. of Medical Services</i>	7,069	223	1,057	16		1,296	983	3,823	656	251	33	5,746	3	19	22	4	1	5
<i>Dep. of Disease Control</i>	2,916	118	906	46		1,070	323	1,033	395	54	15	1,820	3	18	21	4	1	5
<i>Dep. For Development of Thai Tradition & Alternative Medicine</i>	156	8	18			26	34	72	15	3	1	125	2	1	3	1	1	2
<i>Dep. of Medical Sciences</i>	980	33	141	1		175	170	387	195	21	6	779	5	17	22	3	1	4
<i>Dep. of Health Services Support</i>	770	27	403	29		459	25	218	56	4		303	4	1	5	2	1	3
<i>Dep. of Mental Health</i>	3,161	44	553	11		608	458	1,740	240	76	10	2,524	14	11	25	3	1	4
<i>Dep. of Health</i>	1,967	36	335	2		373	226	986	297	55	5	1,569	9	12	21	3	1	4
<i>Food and Drug Administration</i>	591	5	88			93	123	235	113	11	2	484	9	1	10	3	1	4
Ministry of Industry	3,399	86	804	34	0	924	339	1,373	537	21	1	2,271	56	113	169	17	18	35
<i>Off. of the Minister</i>	24		6			6	1	12	4			17		1	1			0
<i>Off. of the Permanent Secretary</i>	942	28	303	5		336	82	325	110	2		519	40	36	76		11	11
<i>Dep. of Industrial Works</i>	547	13	96	3		112	54	197	153	12		416	2	13	15	3	1	4
<i>Dep. of Industrial Promotion</i>	536	10	118	19		147	46	247	74			367		18	18	3	1	4
<i>Dep. of Primary Industrial and Mines</i>	431	14	145	4		163	61	141	51	2		255		10	10	2	1	3
<i>Off. of the Cane and Sugar Board</i>	102	5	32			37	14	33	7	1		55	4	3	7	2	1	3
<i>Thai Industrial Standards Institute</i>	407	7	50	1		58	44	234	56			334		12	12	2	1	3
<i>Off. of Industrial Economics</i>	129		17			17	12	59	27	4		102		7	7	2	1	3
<i>Off. of the Board of Investment</i>	281	9	37	2		48	25	125	55		1	206	10	13	23	3	1	4

Ordinary Civil Servants by Department and Position Category and Level, Fiscal Year 2010 (Con't)

Department	Total	Position Category and Level																
		General Positions					Knowledge Worker Positions						Managerial Positions			Executive Positions		
		O1	O2	O3	O4	Total	K1	K2	K3	K4	K5	Total	M1	M2	Total	S1	S2	Total
Autonomous Organizations	6,350	1,115	1,275	172	0	2,562	1,527	1,697	299	39	14	3,576	98	30	128	17	67	84
<i>The Off. of His Majesty's Principal Private Secretary</i>	451	52	70	9		131	61	139	70	7	5	282	2	8	10	6	22	28
<i>Bureau of the Royal Household</i>	2,301	833	477	130		1,440	583	172	23	20	6	804	8	6	14	6	37	43
<i>Bureau of National Buddhism</i>	865	16	124	1		141	147	474	26			647	74	2	76		1	1
<i>Off. of the Royal Development Project Board</i>	112		5	1		6	9	58	24	3	3	97	1	4	5		4	4
<i>The National Research Council of Thailand</i>	203	11	54			65	26	30	70	2		128	7		7	2	1	3
<i>The Royal Institute</i>	67	7	13	1		21	15	22	3			40	4		4	1	1	2
<i>Anti-Money Laundering Off.</i>	193		4			4	73	73	31	3		180	2	5	7	2		2
<i>Off. of the Attorney General</i>	2,088	196	528	30		754	591	702	38	2		1,333		1	1			0
<i>Off. of National Economic and Social Advisory Council</i>	70					0	22	27	14	2		65		4	4		1	1
Total	362,553	17,975	89,648	6,749	0	114,372	44,924	169,273	23,773	2,902	217	241,089	3,547	2,437	5,984	526	582	1,108

Remark 1) Department of Physical Education has changed the name to Office of Sports and Recreation Development since August 20, 2010.

(Unit : Person)

2) Department of Tourism has changed the name to Office of Tourism Development since August 20, 2010.

3) Department of Civil Aviation has changed the name to The Department of Aviation since November 12, 2009.

Executive Positions by Ministry, Level, and Sex, Fiscal Year 2010

<i>Ministry</i>	<i>Primary Level</i>		<i>Higher Level</i>		<i>Grand Total</i>			
	<i>Male</i>	<i>Female</i>	<i>Male</i>	<i>Female</i>	<i>Total</i>	<i>Male</i>	<i>Female</i>	<i>% Female</i>
<i>Total</i>	209	75	196	56	536	405	131	24.44
Office of the Prime Minister	3	2	37	11	53	40	13	24.53
M. of Finance	10	15	9	4	38	19	19	50.00
M. of Foreign Affairs	14	7	13	4	38	27	11	28.95
M. of Tourism and Sports	3		2	1	6	5	1	16.67
M. of Social Development and Human Security	6	2	4	3	15	10	5	33.33
M. of Agricultures and Cooperatives	28	9	16	2	55	44	11	20.00
M. of Transport	17		9	1	27	26	1	3.70
M. of Natural Resource and Environment	17	5	10	4	36	27	9	25.00
M. of Information and Communications Tech.	4	2	4		10	8	2	20.00
M. of Energy	8	1	7		16	15	1	6.25
M. of Commerce	8	10	5	5	28	13	15	53.57
M. of Interior	17	1	11		29	28	1	3.45
M. of Justice	18	7	11	5	41	29	12	29.27
M. of Labour	7	5	5	3	20	12	8	40.00
M. of Culture	5	2	6	1	14	11	3	21.43
M. of Science and Technology	3		4	1	8	7	1	12.50
M. of Education	2	1	16	5	24	18	6	25.00
M. of Public Health	20	3	12	1	36	32	4	11.11
M. of Industry	15	2	9	3	29	24	5	17.24
Autonomous Organizations	4	1	6	2	13	10	3	23.08

Notes : 1) Executive positions refer to heads or deputy heads of agencies at the ministerial or departmental levels.

(Unit : Person)

2) not including executive positions of Office of His Majesty's Principal Private Secretary and Bureau of Royal Household.

The background of the page is an abstract composition of diagonal bands. The top half features a solid dark blue band, followed by a brown band, a light blue band with a fine halftone dot pattern, a solid light blue band, a white band with a fine halftone dot pattern, a dark blue band with a fine halftone dot pattern, a solid light blue band, a brown band with a fine halftone dot pattern, and finally a solid light blue band at the bottom. The text is positioned in the lower right quadrant of the page.

*Prepared by Bureau of Classification and Compensation Development
Office of the Civil Service Commission*